

# \$375,000 - 24 Hammond Close, Sylvan Lake

MLS® #A2202641

## \$375,000

3 Bedroom, 2.00 Bathroom, 1,291 sqft  
Residential on 0.10 Acres

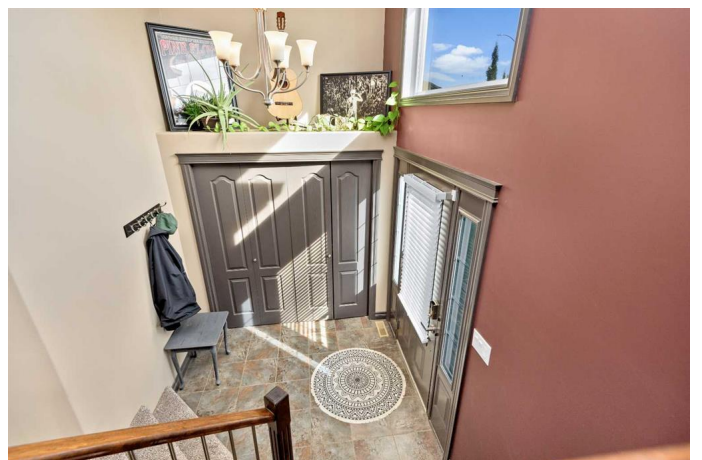
Hewlett Park, Sylvan Lake, Alberta

This well maintained bi-level features vaulted ceilings, newer carpets and newer stainless steel appliances. Entering through the front door, you will be please with the large foyer which give you and your family plenty of room to remove coats and shoes without being crowded. The kitchen features plenty of rich cabinetry and a large pantry for all your kitchen storage needs, ample counter space and a breakfast bar. The dining area provides plenty of space for a formal dining table and the french doors lead out to a deck and the fully fenced backyard with a HOT TUB. There are 3 bedrooms on the main floor, perfect for younger families. The primary bedroom features his/her closets and a 4pc ensuite with a jetted tub. Downstairs is awaiting your own personal touches. There is rear off street parking for your vehicles and even enough room to park your RV! Other updates to note, the HWT was also just replaced and washer/dryer are 1 year old.

Built in 2008

## Essential Information

MLS® #	A2202641
Price	\$375,000
Bedrooms	3
Bathrooms	2.00
Full Baths	2
Square Footage	1,291



Acres	0.10
Year Built	2008
Type	Residential
Sub-Type	Detached
Style	Bi-Level
Status	Active

### **Community Information**

Address	24 Hammond Close
Subdivision	Hewlett Park
City	Sylvan Lake
County	Red Deer County
Province	Alberta
Postal Code	T4S 0C7

### **Amenities**

Parking Spaces	3
Parking	Off Street, Parking Pad, RV Access/Parking

### **Interior**

Interior Features	Breakfast Bar, Jetted Tub, Pantry
Appliances	Dishwasher, Microwave, Refrigerator, Stove(s), Washer/Dryer
Heating	In Floor Roughed-In, Forced Air, Natural Gas
Cooling	None
Has Basement	Yes
Basement	Full, Unfinished

### **Exterior**

Exterior Features	Storage
Lot Description	Back Lane, Back Yard, Landscaped, Private
Roof	Shingle
Construction	Vinyl Siding, Wood Frame
Foundation	Poured Concrete

### **Additional Information**

Date Listed	March 14th, 2025
Days on Market	19
Zoning	R5

### **Listing Details**

Listing Office

Coldwell Banker Ontrack Realty

Data is supplied by Pillar 9â„¸ MLSÂ® System. Pillar 9â„¸ is the owner of the copyright in its MLSÂ® System. Data is deemed reliable but is not guaranteed accurate by Pillar 9â„¸. The trademarks MLSÂ®, Multiple Listing ServiceÂ® and the associated logos are owned by The Canadian Real Estate Association (CREA) and identify the quality of services provided by real estate professionals who are members of CREA. Used under license.