

# \$515,000 - 105 303a Larch Close, Rural Red Deer County

MLS® #A2196165

**\$515,000**

0 Bedroom, 0.00 Bathroom,  
Commercial on 0.00 Acres

Piper Creek Business Park, Rural Red Deer  
County, Alberta

We are excited to offer this rare opportunity for  
passive income from an industrial tenant. This  
condo

was built in 2016 & features modern upgrades  
and a spacious shop. Zoned BSI  
Industrial. This property

includes 3-phase 100-amp power, a 12' x 14'  
loading door, forced air heating, We are  
excited to offer this rare opportunity for passive  
income from an industrial tenant. This condo

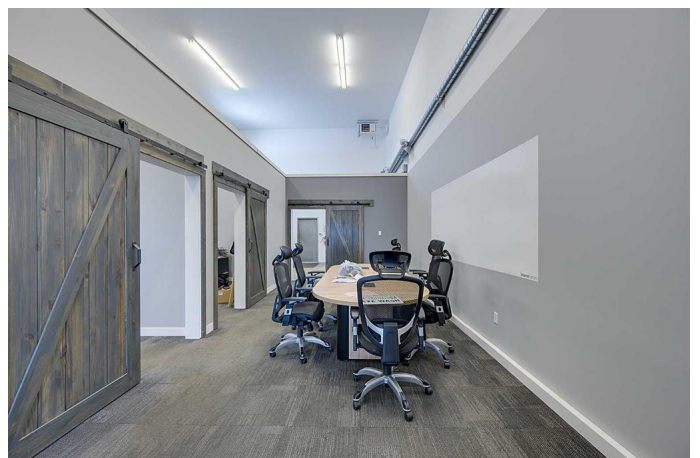
was built in 2016 & features modern upgrades  
and a spacious shop. Zoned BSI  
Industrial. This property

includes 3-phase 100-amp power, a 12' x 14'  
loading door, forced air heating, two  
offices, a spacious reception area, a large  
boardroom, a kitchen, and 2 washrooms.

Built in 2016

## Essential Information

MLS® #	A2196165
Price	\$515,000
Bathrooms	0.00
Acres	0.00
Year Built	2016
Type	Commercial
Sub-Type	Industrial
Status	Active



## Community Information

Address	105 303a Larch Close
Subdivision	Piper Creek Business Park
City	Rural Red Deer County
County	Red Deer County
Province	Alberta
Postal Code	T4E 1B4

## Additional Information

Date Listed	February 19th, 2025
Days on Market	42
Zoning	BSI

## Listing Details

Listing Office          Royal LePage Network Realty Corp.

Data is supplied by Pillar 9â„¢ MLSÂ® System. Pillar 9â„¢ is the owner of the copyright in its MLSÂ® System. Data is deemed reliable but is not guaranteed accurate by Pillar 9â„¢. The trademarks MLSÂ®, Multiple Listing ServiceÂ® and the associated logos are owned by The Canadian Real Estate Association (CREA) and identify the quality of services provided by real estate professionals who are members of CREA. Used under license.