

\$2,015 - 2nd Floor, 4820 50 Avenue, Red Deer

MLS® #A2193056

\$2,015

0 Bedroom, 0.00 Bathroom,
Commercial on 0.00 Acres

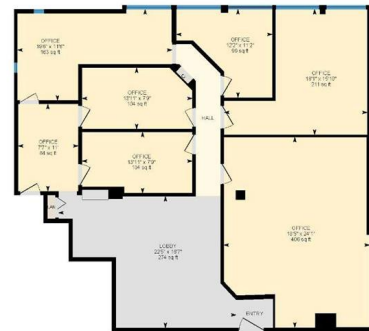
Downtown Red Deer, Red Deer, Alberta

Come view this office space in the Bunn Building! Great exposure along Little Gaetz with access to many popular shops and restaurants, and plenty of action in the summertime with markets happening every week. This space is 1,612 sq ft and is located on the 2nd floor, but has elevator access. The space has 8 separate rooms that could be used as offices, one is large enough for a boardroom with a sink and cabinetry for storage. There is plenty of natural light streaming in through large windows. Building offers common washrooms and 1 elevator. Monthly rents are all inclusive with no other expenses and there are no long term commitment required.



2nd Floor-4820 50 Ave, Red Deer, AB

Main Floor Exterior Area 1697.15 sq ft
Interior Area 1612.00 sq ft



0 3 6 ft

PREPARED: 20250129

White regions are excluded from total floor area in GUIDE floor plans. All room dimensions and floor areas must be considered approximate and are subject to independent verification.



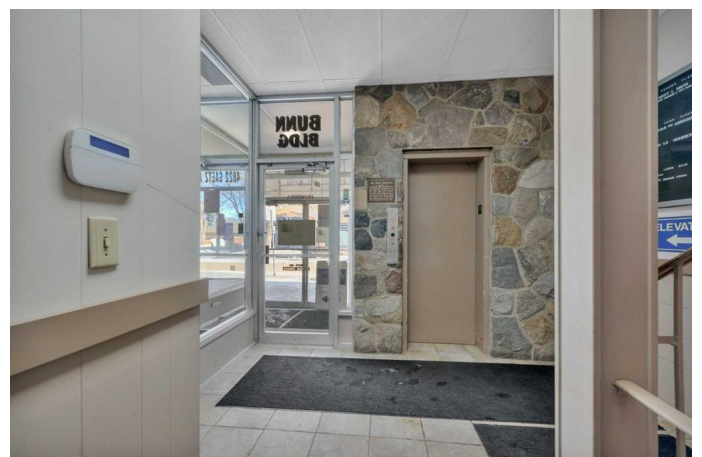
Built in 1965

Essential Information

MLS® #	A2193056
Price	\$2,015
Bathrooms	0.00
Acres	0.00
Year Built	1965
Type	Commercial
Sub-Type	Office
Status	Active

Community Information

Address 2nd Floor, 4820 50 Avenue



Subdivision	Downtown Red Deer
City	Red Deer
County	Red Deer
Province	Alberta
Postal Code	T4N 4A4

Additional Information

Date Listed	February 10th, 2025
Days on Market	50

Listing Details

Listing Office	RE/MAX real estate central alberta
----------------	------------------------------------

Data is supplied by Pillar 9â„¢ MLSÂ® System. Pillar 9â„¢ is the owner of the copyright in its MLSÂ® System. Data is deemed reliable but is not guaranteed accurate by Pillar 9â„¢. The trademarks MLSÂ®, Multiple Listing ServiceÂ® and the associated logos are owned by The Canadian Real Estate Association (CREA) and identify the quality of services provided by real estate professionals who are members of CREA. Used under license.